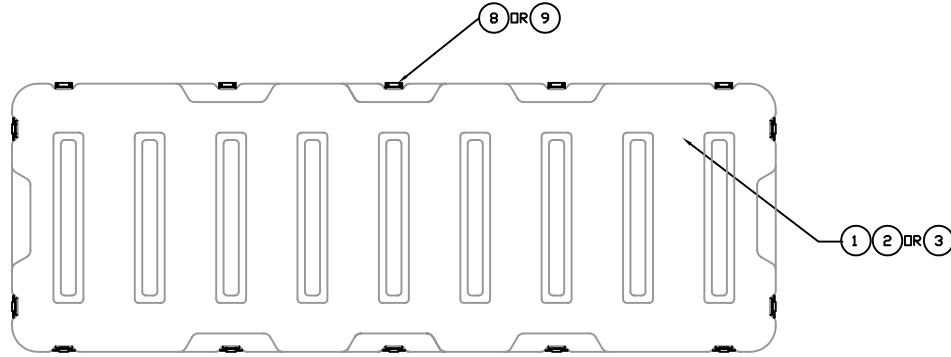
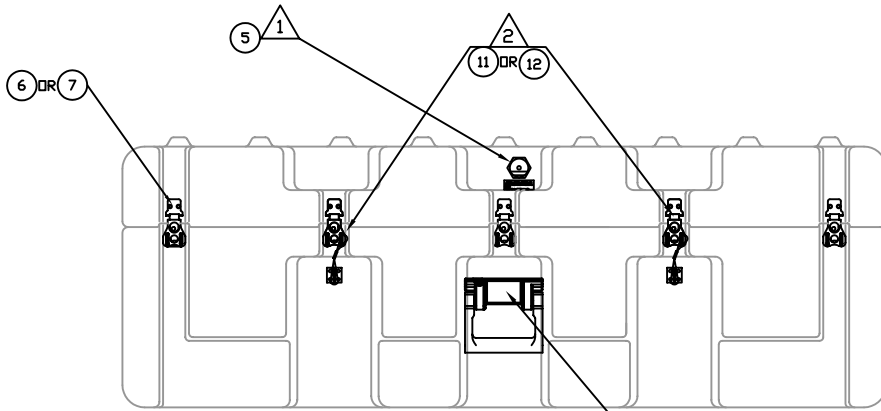


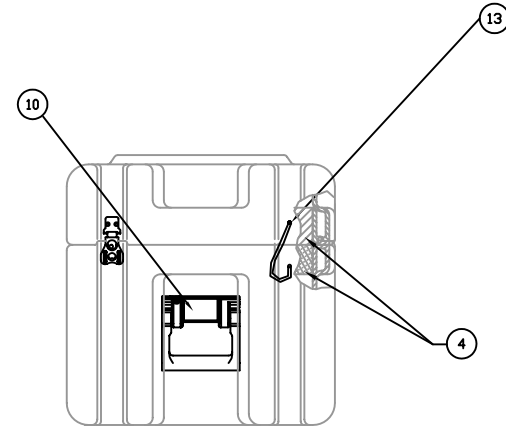
ITEM	DESCRIPTION	DRAWING	-133-137-250	REV.	QTY.	DESCRIPTION	REV.	DATE
1	CONTAINER,AL4915-1105,GRY-133		1	-	-	UPDATED BOM REMOVED COMBINATION	VCH	03/10/22
2	CONTAINER,AL4915-1105,GRN-137		-	1	-	LOCK, DRAWING NO. WAS 472-MK19	VCH	03/10/22
3	CONTAINER,AL4915-1105,TAN-250		-	-	1	CUSHION WAS PART NO. MK19-102	DA	11/12/04
4	CUSHION,SET,4915-1105	472-MK19-CUSH	1	1	1			
5	KIT,AIRTIGHT	MFG-00052-4915AT	1	1	1			
6	KIT,CATCH-&-STRIKE,LG-WG,HZY	MFG-00003-01	7	-	-			
7	KIT,CATCH-&-STRIKE,LG-WG,HCB	MFG-00003-04	-	7	7			
8	KIT,HINGE,HZY	MFG-00010-01	5	-	-			
9	KIT,HINGE,SSP	MFG-00010-03	-	5	5			
10	KIT,CBL,INJ,INT)	MFG-00031	-	4	4			
11	KIT,CATCH&STRIKE,W/CABLE,LK,HCB	MFG-00004-04	-	2	2			
12	KIT,CATCH&STRIKE,W/CABLE,LK,HZY	MFG-00004-01	2	-	2			
13	KIT,CABLE,HINGE,11",SSP	MFG-00070-11	2	2	2			
14	-	-	-	-	-			
15	-	-	-	-	-			



TOP VIEW



FRONT VIEW



RIGHT SIDE VIEW

NOTES:

- 1. LOCATE PRESSURE RELIEF VALVE AS SHOWN.
- 2. LOCATE CABLE CATCH AS SHOWN.
- 3. LOCATE EXTRA HANDLE APPROX AS SHOWN.
- 4. ALSO LOCATE DIRECTLY OPPOSITE.

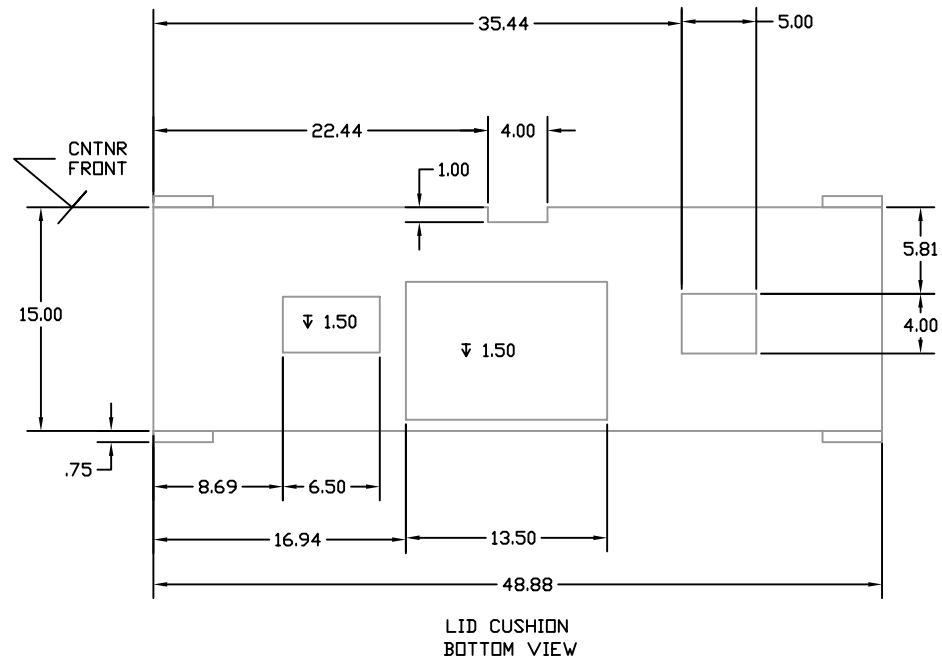
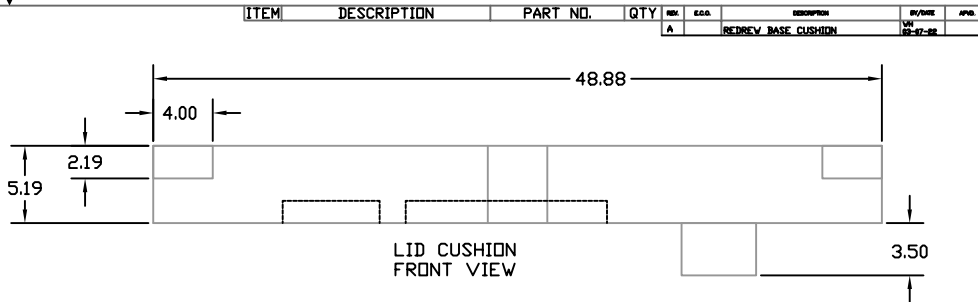
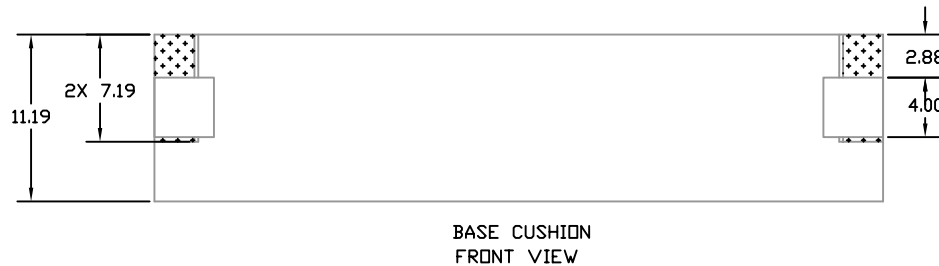
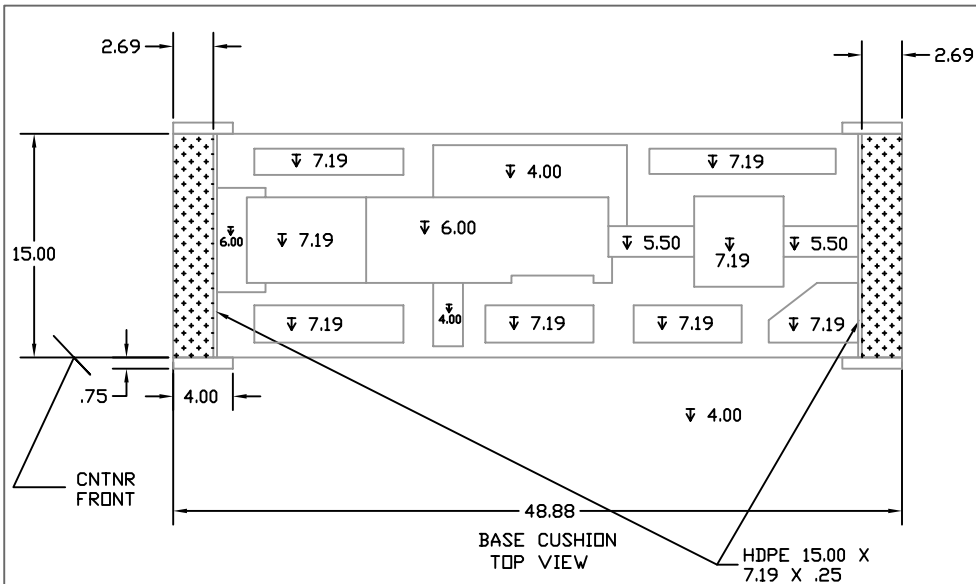
REF: 472-MK19-101  
 UNIT: MK 19  
 CONTRACT NO.

REV. NO.	DATE	BY	CHKD.	APPV.
1	03/04/11	DA	DA	DA



CONTAINER DETAILS		AL4915-1105	
REV. NO.	DATE	BY	CHKD.
1	11/21/14	DA	DA
FILE NO.	XXXXXX	472-MK19-101	B
		REV. 1 OF 1	

472-MK19-101



NOTES:

1. MAT'L POLYETHYLENE FOAM, 2.0 PCF, COLOR BLACK.
2. LOCKING TABS : POLYESTER FOAM, 2.0 PCF COLOR GRAY.
3. ASSEMBLE CUSHION USING HEAT BONDING DR EQUIV.
- 4.
- 5.
6. FOR FOAM TOLERANCES SEE DWG. P21-1215.
7. FOR CONTAINER ASS'Y. SEE B.O.M.
8. MAT'L POLYETHYLENE FOAM, 4.0 PCF, COLOR BLACK.



ITEM	DESCRIPTION	PART NO.	QTY	REV	EDA	DESCRIPTION	BY/DATE	APP.
A	REDREV	BASE CUSHION					141 02-27-92	

REF: 472-MK19-101  
 UNIT: 472-MK19  
 CONTRACT NO.

REV	DATE	BY	CHK	APP.	DESCRIPTION
1	05/04/11				



CUSHION DETAILS	
AL4915-1105	
DATE	11/21/14
REV	472-MK19-102 A
PROJ. NO.	XXXXXX
SHE 1 OF 1	

472-MK19-102