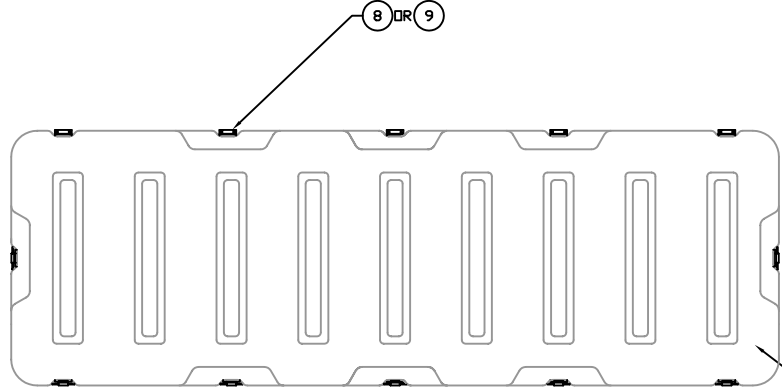


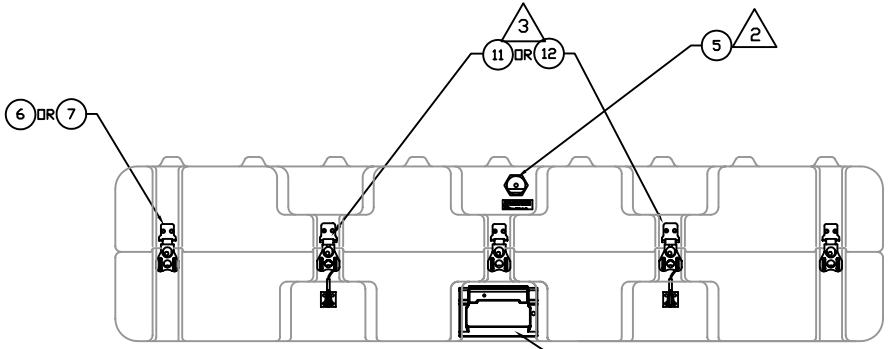
NOTES:

- 1. LOCATE EXTRA HANDLE AS SHOWN
- 2. LOCATE PRESSURE RELIEF VALVE AS SHOWN.
- 3. LOCATE CABLE CATCH LOCKS AS SHOWN

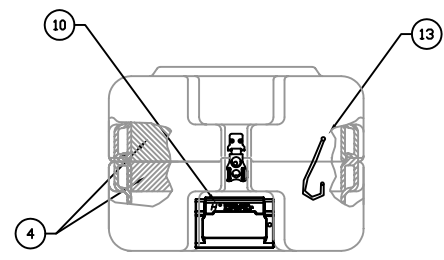
ITEM	DESCRIPTION	DRAWING	-133	-137	-250	REV.	DATE	DESCRIPTION	BY/DATE	APP.
1	CNTNR,AL,4714-0505,GRY-133		1	-	-	A		UPDATED BOX AND REMOVED THE COMBINATION LOCK.	WCH	
2	CNTNR,AL,4714-0505,GRN-137		-	1	-				03/18/20	
3	CNTNR,AL,4714-0505,TAN-250		-	-	1					
4	CUSHION,SET,4714-0505	472-M-2-RECEIVER-102	1	1	1					
5	KIT,AIRTIGHT	MFG-00052-4714AT	1	1	1					
6	KIT,CATCH-&STRIKE,LG-VG,HZY	MFG-00003-01	5	-	-					
7	KIT,CATCH-&STRIKE,LG-VG,HCB	MFG-00003-04	-	5	5					
8	KIT,HINGE,HZY	MFG-00010-01	5	-	-					
9	KIT,HINGE,SSB	MFG-00010-03	-	5	5					
10	KIT,HDL,INJ,(INT),SHORT	MFG-00030	3	3	3					
11	KIT,CATCH&STRIKE,W/CABLE,L,K,HCB	MFG-00004-04	-	2	2					
12	KIT,CATCH&STRIKE,W/CABLE,L,K,HZY	MFG-00004-01	2	-	-					
13	KIT,CABLE,HINGE,11",SSP	MFG-00070-11	2	2	2					
14	-	-	-	-	-					
15	-	-	-	-	-					



TOP VIEW



FRONT VIEW



RIGHT SIDE VIEW

REF: 472-M-2-RECEIVER
UNIT: M2-50CAL-RECEIVER
CONTRACT NO.

NEXT ASSY:	UNLESS OTHERWISE SPECIFIED:	SCALE	1/8"
TOLERANCE:	FINISH:	DATE	2002
BY:	DATE:	DATE:	2002
CHKD:	DATE:	DATE:	2002

HARDIGG INDUSTRIES, INC.
South Deerfield, Massachusetts 01373

This drawing and all copies and the design and data shown are the property of HARDIGG INDUSTRIES, INC. in Deerfield, MA, U.S.A. and include proprietary information. The borrower by receipt, or retention of this drawing, agrees that, except as expressly authorized in writing by HARDIGG INDUSTRIES, INC., it will (1) not use the drawing or any copy of the drawing or data shown (2) not reproduce, copy, transmit, publish or distribute the drawing or any copy for use by others and (3) upon demand return the drawing, all copies and all material copies therefrom.

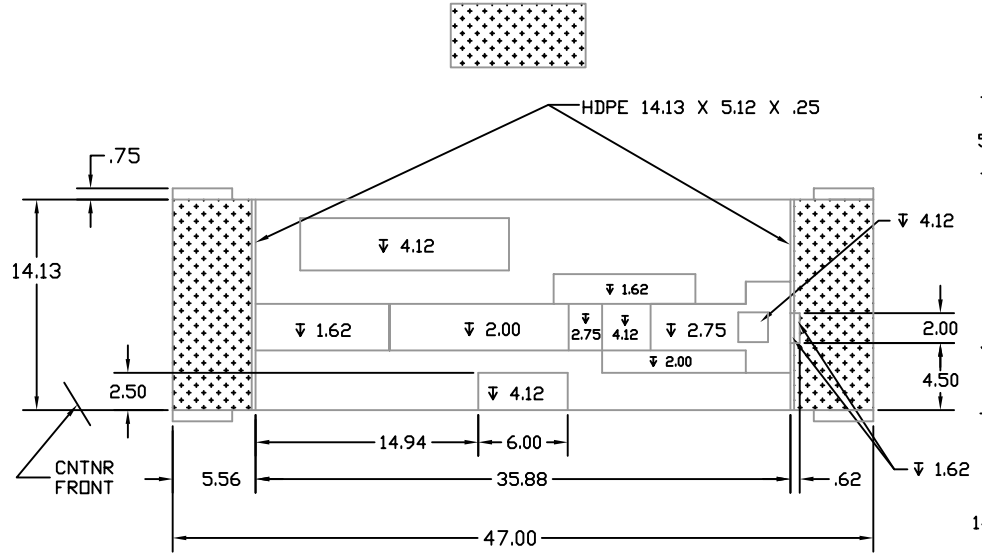
FILE: CNTNR DETAILS
AL4714-0505
DATE: 011214
REV: 1
472-M-2-RECEIVER
PAGE: 1 OF 1

472-M-2-RECEIVER

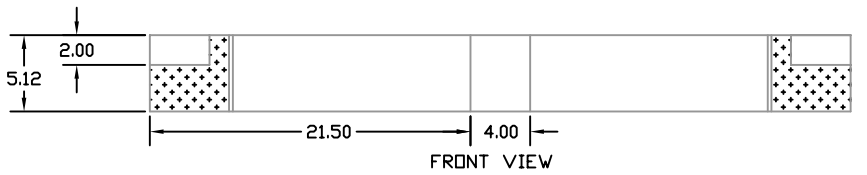
NOTES:

1. MAT'L POLYETHYLENE FOAM, 2.0 PCF, COLOR BLACK.
2. LOCKING TABS : POLYESTER FOAM, 2.0 PCF COLOR GRAY.
3. ASSEMBLE CUSHION USING ENGINEERING APPROVED METHODS.
4. FOR FOAM TOLERANCES SEE DWG. P21-1215.
5. FOR CONTAINER ASS'Y. SEE B.O.M.
6. FOR ADDITIONAL DIMENSIONAL INFORMATION;
PLEASE ACCESS ACAD FILE IN CONFOAM.
7. MAT'L POLYETHYLENE FOAM, 4.0 PCF, COLOR BLACK.

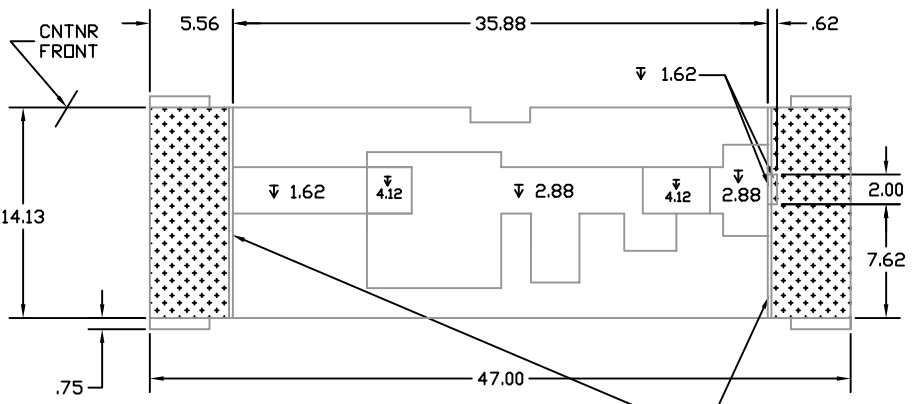
ITEM	DESCRIPTION	PART NO.	QTY	REV.	EDA	DESCRIPTION	BY/DATE	APP.
A	RETREIV LID CUSHION						VCH 03/07/23	
B	RETREIV CUSHION TO HOLD VEHICLE MOUNTED .50 CAL.						VCH 03/10/20	



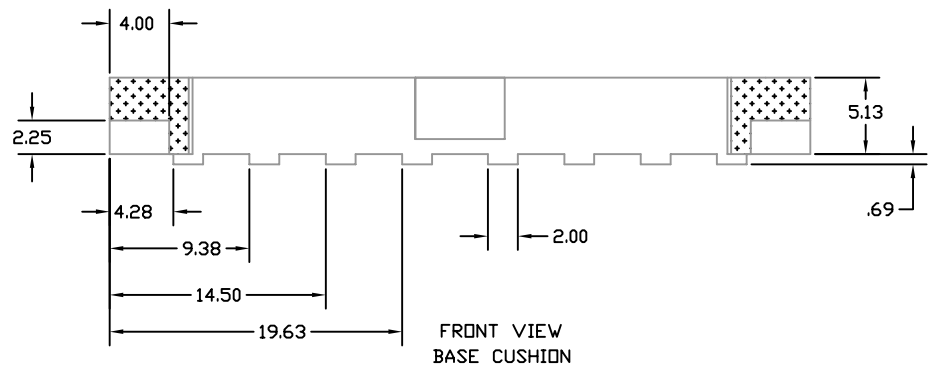
TOP VIEW



FRONT VIEW



BOTTOM VIEW
LID CUSHION



FRONT VIEW
BASE CUSHION

REF: 472-M-2-RECEIVER
UNIT: M2 50CAL MACHINE GUN RECEIVER
CONTRACT NO.

REV. NO.	1/8
DATE	03/08/21
BY	VCH
CHKD	APL
APP'D	

UNLESS OTHERWISE SPECIFIED, DIMENSIONS ARE IN INCHES AND DECIMALS THEREOF.

HARDIGG INDUSTRIES, INC.
South Deerfield, Massachusetts 01373

CUSHION DETAILS
AL4714-0505

11214 472-M-2-RECEIVER-102
1 of 1

472-M-2-RECEIVER-102